

Maternity Unit

Happy Valley

Hong Kong Sanatorium & Hospital
27-29/F, Li Shu Pui Block
2 Village Road, Happy Valley, Hong Kong
Tel: (852) 3966 3270
Fax: (852) 2892 7515
Email: maternity@hksh-hospital.com
www.hksh-hospital.com



Maternity Packages

(Effective 1 February 2025)



For enquiries and appointments,
please contact us

Normal Delivery Packages

For Mother

- Room charges for 3 days & 2 nights from the day of delivery of baby
- Delivery Suite charges, routine materials, dressing and maternity nursing care
- Charges for delivery instruments and fetal monitoring in the Delivery Suite
- Entonox and basic medication during hospitalisation
- Blood tests (complete blood picture, type and screen) before delivery
- Accompanying person inside Delivery Suite
- Instruction on breastfeeding by International Board Certified Lactation Consultants
- Use of breast-pump
- Instruction on newborn care, feeding techniques and postnatal care
- Hotline service
- Three standard meals a day

For Baby

- Nursery and breastfeeding room charges for 3 days & 2 nights during mother’s hospitalisation
- Routine nursing care and monitoring
- Breast milk substitute, baby clothing and napkins during hospitalisation
- Use of infant warmer and immediate newborn care after birth in Delivery Suite
- Transport incubator from Delivery Suite to Nursery
- Baby bed warmer on the first day
- Newborn vaccinations: Hepatitis B vaccine, and BCG (Hepatitis B immunoglobulin not included)
- Vitamin K1 injection
- Routine blood tests (blood grouping, Rh factor, G6PD, TSH, complete blood picture)
- Use of jaundice meter

Price List (Package effective date starts from the day of delivery)

| | | |
|-------------------|-------------------|------------|
| General ward | 3 days & 2 nights | HK\$26,800 |
| Semi-private room | 3 days & 2 nights | HK\$34,800 |
| Private room | 3 days & 2 nights | HK\$46,300 |

Extended stay before or after childbirth and related services are not included in the maternity package and subject to separate charges.

* Effective 1 February 2025



Souvenirs (for all packages) :

- One digital photograph of newborn baby and a photo album
- Baby gift



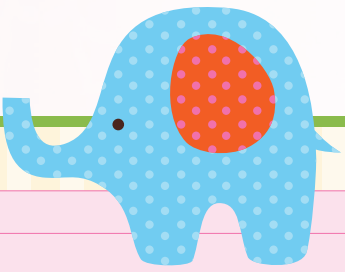
Caesarean Section Packages

For Mother

- Room charges for 5 days & 4 nights from the day of delivery of baby
- Operation room charges, routine materials, dressing and maternity nursing care
- Charges for routine anaesthetic drugs, assisted delivery instruments and routine monitoring
- Blood tests (complete blood picture, type and screen) before delivery
- Basic medication during hospitalisation
- Routine post-operative nursing care
- Instruction on breastfeeding by International Board Certified Lactation Consultants
- Use of breast-pump
- Instruction on newborn care, feeding techniques and postnatal care
- Hotline service
- Three standard meals a day

For Baby

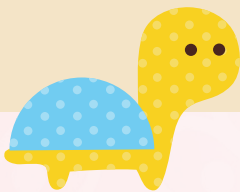
- Nursery and breastfeeding room charges for 5 days & 4 nights during mother's hospitalisation
- Routine nursing care and monitoring
- Breast milk substitute, baby clothing and napkins during hospitalisation
- Use of infant warmer and immediate newborn care after birth in Operating Theatre
- Transport incubator from Operating Theatre to Nursery
- Baby bed warmer on the first day
- Newborn vaccinations: Hepatitis B vaccine and BCG (Hepatitis B immunoglobulin not included)
- Vitamin K1 injection
- Routine blood tests (blood grouping, Rh factor, G6PD, TSH, complete blood picture)
- Use of jaundice meter



Price List (Package effective date starts from the day of delivery)

| | | |
|------------------------------------------------------------------------------------------------------------------------------------------|-------------------|------------|
| General ward | 5 days & 4 nights | HK\$34,600 |
| Semi-private room | 5 days & 4 nights | HK\$45,100 |
| Private room | 5 days & 4 nights | HK\$66,300 |
| Extended stay before or after childbirth and related services are not included in the maternity package and subject to separate charges. | | |

* Effective 1 February 2025



Souvenirs (for all packages) :

- One digital photograph of newborn baby and a photo album
- Baby gift



Points to Note

Charges not included

- Obstetrician, Paediatrician, Anaesthesiologist and other doctors' fees are not included

Charges not included for Mother

- Additional surgical procedures, medications and investigations: e.g. laboratory tests, blood transfusion, ultrasound, X-ray, extra intravenous infusion, emergency treatment and use of special equipment
- Own choice of meals and overnight companion bed (companion bed only available in semi-private and private rooms)

Charges not included for Baby

- Incubator, phototherapy, additional medications and investigations: e.g. laboratory tests, blood transfusion, ultrasound, X-ray, intravenous infusion, emergency treatment and use of special equipment

Other Charges

- Epidural anaesthesia in Delivery Suite: additional charges for General Ward HK\$8,000, Semi-Private Room HK\$10,400, Private Room HK\$12,000
- Specified time for Caesarean Section
During 8:00 am - 10:00 pm from Monday to Saturday: additional charges for General Ward HK\$5,000, Semi-Private Room HK\$6,500, Private Room HK\$7,500
During 8:00 am - 10:00 pm on public holidays and Sundays: additional charges for General Ward HK\$14,320, Semi-Private Room HK\$18,620, Private Room HK\$24,000
Anytime between 10:00 pm - 8:00 am (next day): additional charges for General Ward HK\$28,630, Semi-Private Room HK\$37,220, Private Room HK\$42,950
- Specified time for induction of labour
During 8:00 am - 10:00 pm: additional charges for General Ward HK\$6,890, Semi-Private Room HK\$8,960, Private Room HK\$11,580
Anytime between 10:00 pm - 8:00 am (next day): additional charges for General Ward HK\$11,480, Semi-Private Room HK\$14,920, Private Room HK\$19,300
- Public holidays, Sundays for induction of labour
During 8:00 am - 10:00 pm: additional charges for General Ward HK\$6,890, Semi-Private Room HK\$8,960, Private Room HK\$11,580
Anytime between 10:00 pm - 8:00 am (next day): additional charges for General Ward HK\$11,480, Semi-Private Room HK\$14,920, Private Room HK\$19,300

- Emergency Caesarean Section (including those who have no booking or those who start labour before the booked time): additional charges for General Ward HK\$8,400, Semi-Private Room HK\$10,920, Private Room HK\$12,600
- Emergency Caesarean Section (those who fail in trial of labour)
Less than 12 hours: additional charges for General Ward HK\$8,400, Semi-Private Room HK\$10,920, Private Room HK\$12,600
Exceeded 12 hours: additional charges for General Ward HK\$13,000, Semi-Private Room HK\$16,900, Private Room HK\$19,500
- Multiple pregnancies: extra 35% of the package charge for each additional baby
- Collection of placenta:
service charges for General Ward HK\$830, Semi-Private Room HK\$1,080, Private Room HK\$1,250
- Collection of cord blood for stem cell storage:
service charges for General Ward HK\$830, Semi Private Room HK\$1,080, Private Room HK\$1,250
If any services provided from non-accredited cord blood banking companies are chosen, approval from HKSH Administration Department prior to the admission is required. HKSH reserves the final decision to disapprove any non-accredited cord blood banking companies to provide services at HKSH.
- Charge for husband accompanying wife inside the Operating Theatre: HK\$800

Remarks

- Standard accommodation covered by maternity packages:
Bed not by the window in General Ward; Standard Semi-Private Room; Standard Private Room
Extra charges are applied for bed by the window in General Ward, other types of non-standard Semi-Private Room, and non-standard Private Room. For more information, please contact us or ask our staff upon admission
- Mothers scheduled for elective Caesarean Section should be admitted four hours before operation. This allows sufficient time for preoperative care to the expectant mother. Admission less than four hours is considered as emergency Caesarean Section
- Once a package is opted, withdrawal from the package is not allowed
- For enquiry, please contact Maternity Unit at 3966 3270
- In case of dispute, the Chinese version shall prevail

For deposit payment, please contact our staff for details.

We offer the following courses:

Antenatal class (in Cantonese or Putonghua)
Breastfeeding class (in Cantonese)

Enquiries and enrollment: 3966 3270

